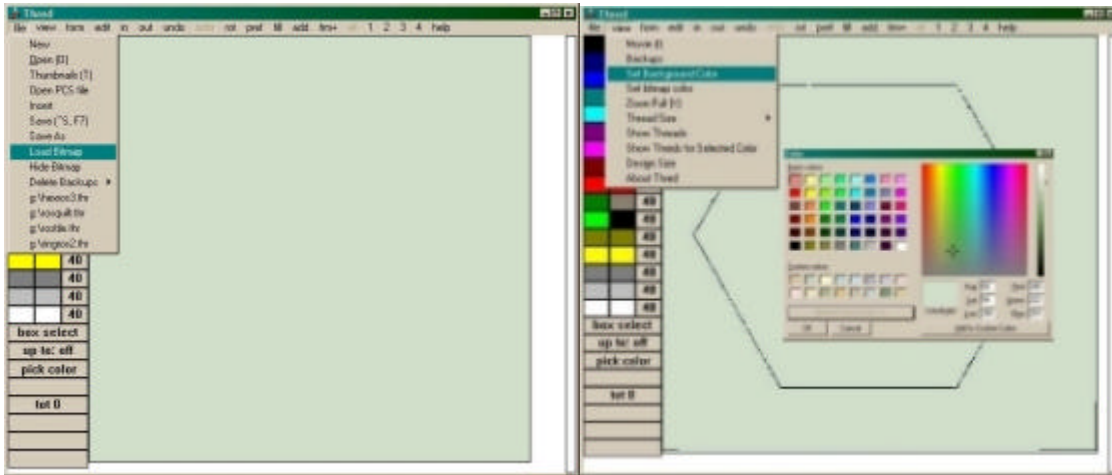


Hexagon Rose Tutorial

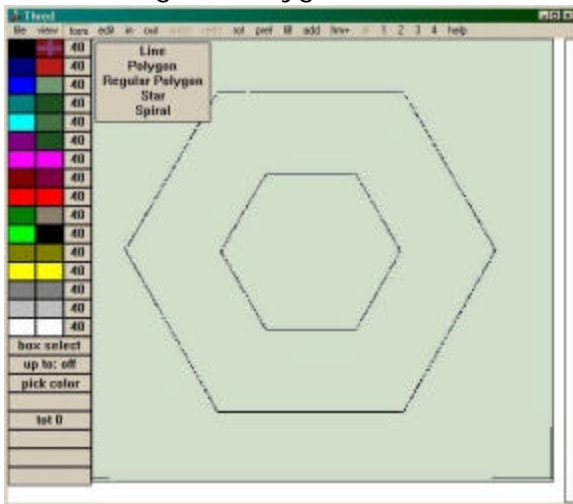
©2000 Alfie & Marion McCoskey, 2122 Elm St. Chico, CA 95928
All rights reserved

Begin by loading the bitmap, "hexros". "Load bitmap" is found under "File" on the menu across the top of the screen. Your bitmap must be black and white, and should be located in the same directory where you store your design.

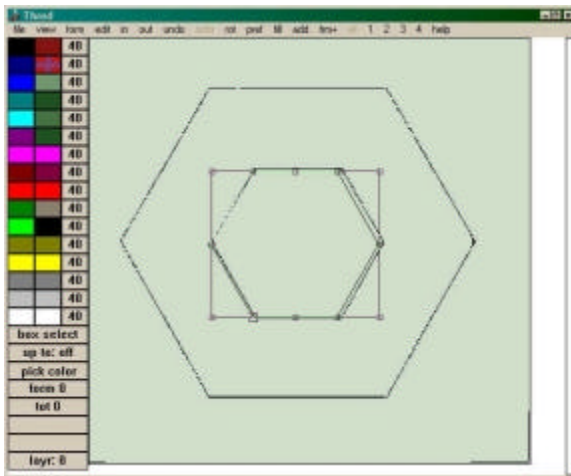
To set the colors for your background and bitmap, use "View/set...colors". The Windows color dialog box lets you make the colors you like by using "Define custom colors".



Create a hexagon shaped form by selecting "Form/regular polygon" and typing 6 into the blank for number of sides, which will appear when you select "Regular Polygon".



Place the form over the center hexagon in the bitmap by selecting it (if needed) with a right click, then left dragging it into place.

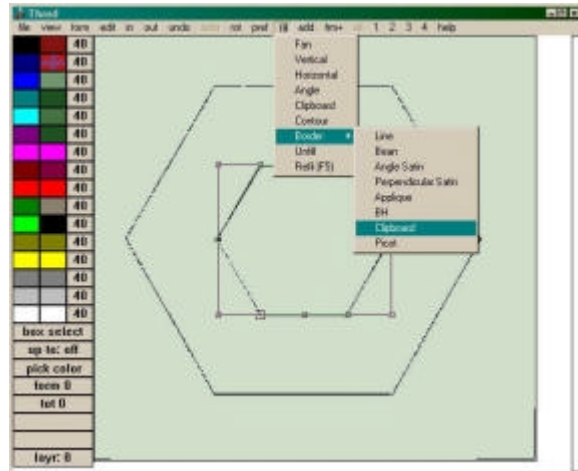
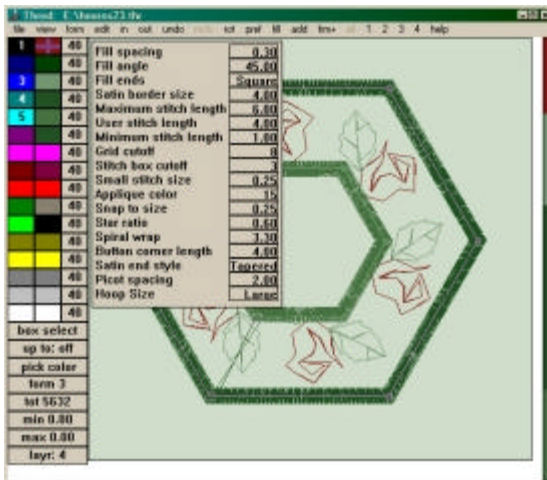


Copy the form to layers, two, three and four. That command is found under "Edit/copy to layer". The original form (on layer "all") should be moved to layer one, using "Edit/move to layer".

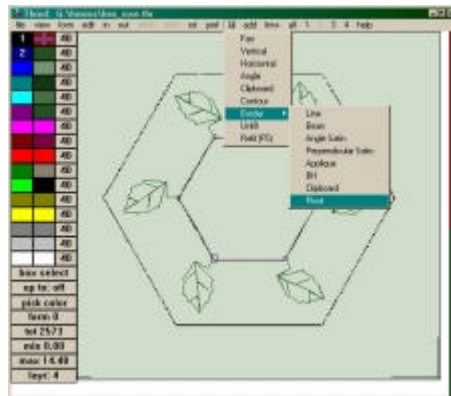
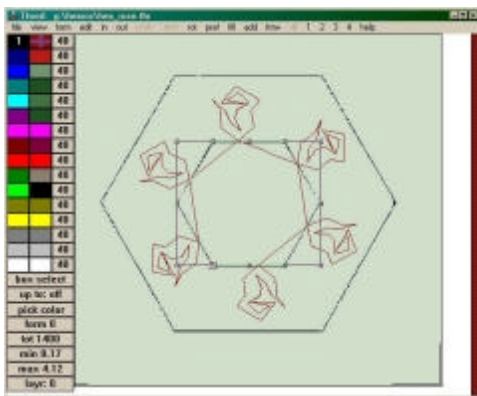
Resize each form so it fits the bitmap. Layers one, two and three should have one small form only. Layer four should have one large form only. Resizing a form is simple. Select it with a right click, left drag a corner to change the size, then left click and hold down the mouse button to "grab" the form and drag it where you want it. The "grab" is done with the cursor point on the middle of the design, not the selection box. Save your file.

Once you have a form on each layer except layer "all", begin to fill them. Since this design uses clipboard and picot fills, you need to get the roses and leaves onto the clipboard first. Open the file "rosclip.thr". Left click on the color ribbon at the right of the screen to select the stitches, and use "Control+C" to put the stitches on the Windows clipboard. Open the file "Hexrose" which should contain your forms, and click the "1" on the menu. That will take you to layer one.

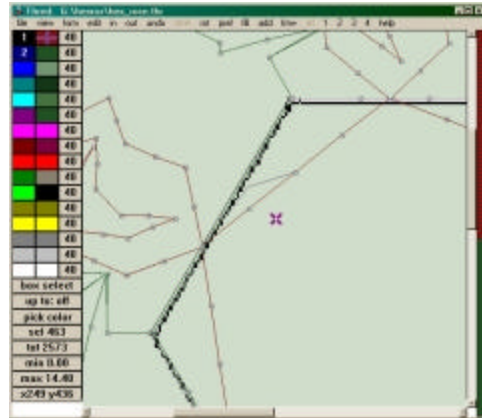
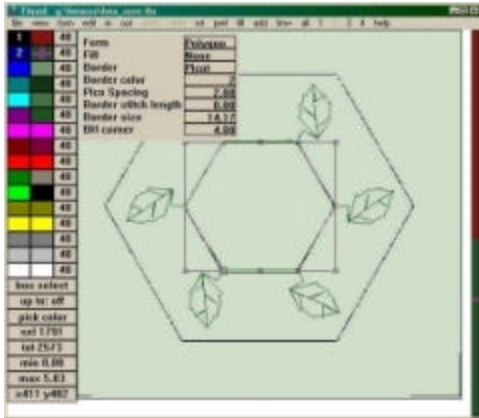
Before you fill the form, check the preferences settings. Change the settings for fill spacing, satin border size, maximum stitch length, and button (hole) corner length to match the settings in the picture below:



You should see the roses appear. There will be stitches that need editing between the roses. We will edit those after we have the leaves on the form in layer two. Save your work, and then open the file "leafclip.thr". Select the stitches by left clicking on the color bar at the right of the screen, hit "Control+C" to put it on the Windows clipboard and reopen the file containing your design. Select layer 2 from the menu, and right click on the small hexagon form. Then select "Fill/border/picot".



You should have the cross mark in the color you want the stitches to become, but if you don't remember in time, simply select the form and hit "F" to get the form-form. You can change the values in the form and the program will change the design, or you can also simply select the stitches and left click on the left hand box for the color you want.



Once you have both the leaves and roses it's time to edit the connecting stitches in the rose fill. Turn off the forms by clicking "Frm+" on the menu. It will turn to "Frm-". (It's easier to select individual stitches when the form is off because the program selects form node boxes before it selects stitch boxes.)

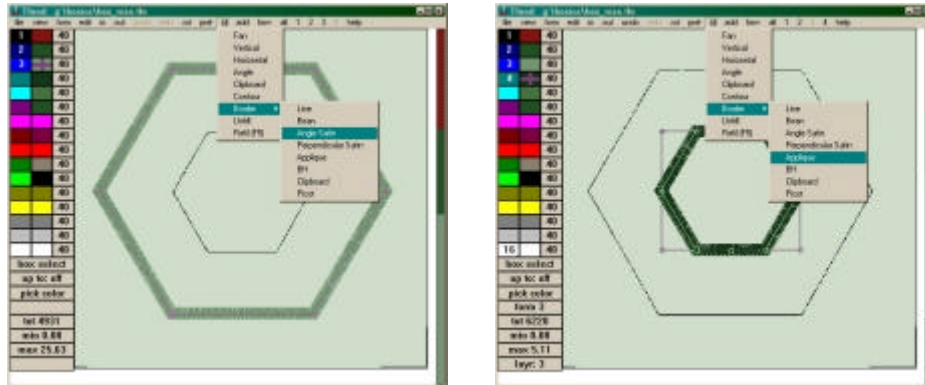
Zoom in on the stitches. There are several ways:

- A. Place a mark on the point you want to focus the zoom, and tap the "M" key until you are zoomed in close enough to see the stitch boxes. The settings in your preferences will probably be for stitch box cut off at 3 zooms.
- B. Left click on "In" on the menu at the top of the screen and make a box for the zoom field.
- C. Tap the "Z" key to zoom in to any selected stitch or form. The "S" key will move the zoomed area in the direction the mouse is moving.
- D. "X" will zoom out.
- E. The "out" command on the menu will zoom out.

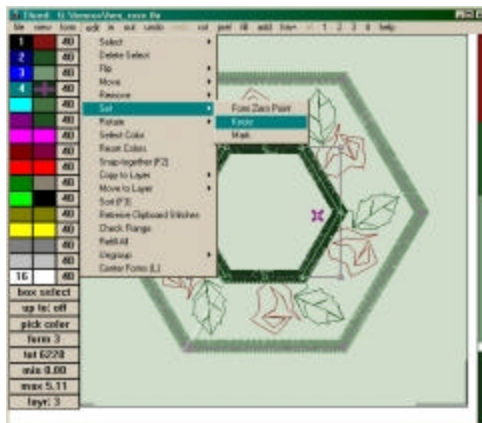
Move the stitches until they are over the lines of the bitmap, where the satin border that we will make next should cover them. Left drag the stitch points to move them. You can also select a stitch by holding the cursor by it and tapping "C". The arrow keys will move you through the stitches, if you need to be sure which stitch you have selected. Save your work.

After you have edited the connecting stitches of the rose, it's time to fill the remaining two forms. Turn the forms back on by clicking "Frm-".

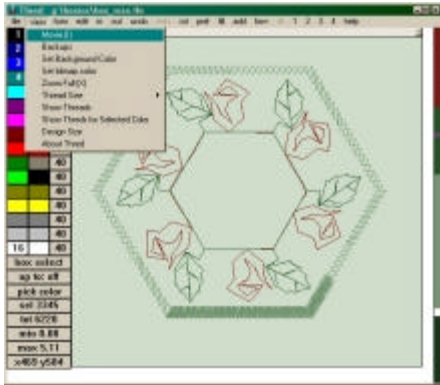
Put the cross mark in the third user color box. Select the 4 on the menu bar, and right click on the large hexagon form on that layer. Select "Fill/border/angle satin".



Move to layer 3. Move the cross mark to the fourth color box. Right click to select the small hexagon form and left click on "Fill/border/appliqué". Save your work. Move to layer "all" and look at the design. Then Select "Edit/set/knots". If you like, select "View/ movie" or tap the "I" key to see the design as it will stitch.



The white on the color ribbon to the right of the screen shows the double row of straight stitches used to anchor the appliqué fabric. When the embroidery machine stops after stitching that color, carefully trim the extra appliqué fabric away and stitch the last color.



If you select "View/design size", you can see that this design is 102 mm. That is just a little too large for the hoops of many embroidery machines. You can use "Control+A" to select all the stitches and then move the corner of the selection box until it's about 2 mm smaller. The forms remain the same size, but the design is ready for use in hoops smaller than 100 mm.